

WE OFFER

- Standard Chemical Feed Systems
- Controls / Controllers
- Metering Pumps
- Custom Engineered Systems
- On-Site Oxidant Generation
- Polymer Feed Systems
- Chemical Storage & Accessories
- Booster Skids
- Performance Monitoring Tools
- Transfer Pumps
- Level Monitoring
- Web Based Remote Monitoring
- Instrumentation
- Flow Measurement
- Innovative Accessories

SPECIALIZED SERVICES

- System Installations
- Start Up & Commissioning
- Contract Maintenance
- Emergency Repairs
- Plant Audits / System Surveys
- Pump/ Accessory Repairs
- Equipment Pool Management
- Equipment Rentals
- Controller Maintenance & Repair

MARKETS SERVED

- Industrial
- Municipal
- Commercial
- Recreational

31 Presidential Drive
Roselle, IL. 60172

Toll Free: 888-200-1800

Phone: 630-351-9070

Fax: 630-351-9080

www.equip-solutions.com

Wireless Remote Alarm System



- **Wireless Alarming 24/7**
- **No Telephone Lines**
- **No Internet Lines**
- **Works With All Major Brands of Controllers**
- **Real –Time Email or Text Notification**
- **Easy Set Up**
- **No Programming, No Cell Contract**
- **Monthly / Weekly Reports**
- **Back Up Power**
- **Stand Alone Capability**

The EquipConnect™ is a wireless/cellular remote alarm & notification service that uses built-in two-way deep building penetration telemetry technology to provide alarm autodialing, remote monitoring, data logging and reporting without the need for telephone or internet lines. It can be wired easily into to a controller, PLC, process analyzer or used as a stand alone device to monitor independent environmental sensors.

Applications include cooling/boiler water treatment, process monitoring, chemical inventory management, chemical feed verification, wastewater, drinking water, building management, irrigation, etc.

In addition, we can install remote monitoring tools so that critical parameters can be reported wirelessly to enable remote control and observation of results.

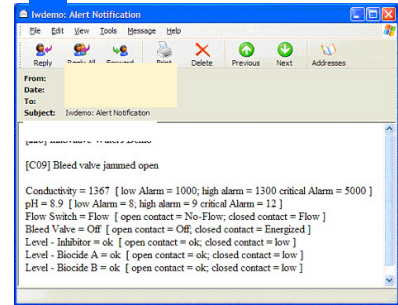
Connects directly to your existing control system and/or sensors. It is ultra-easy to setup. There is no programming, no cell contract to obtain, no webpage to log on.

You can choose how EquipConnect™ notifies you: by email to your computer or PDA or by text message to your cell phone or pager.

Real-time alerts annotate alarms to tell you exactly what's wrong in simple terms. Such as "high conductivity", "low pH", or "low chem level", "bleed valve problem", "loss of prime", etc. Alarm notifications include all inputs values at time of alarm.

Specifications

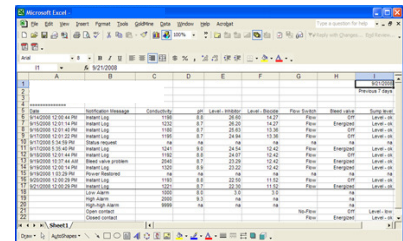
- Analog Inputs : Up to 4 - [4-20mA, powered or unpowered]
- Digital Inputs : Up to 5 - [on/off dry contact dc type]
- Inputs common/ground : NOT isolated - Common ground for all inputs
- Supply Power : 100-240 VAC or 9-25VDC (upon request)
- Environmental Rating : NEMA 4X enclosure with front hinged door
- Dimensions : P = 8" x 4" x 3"; N = 6" x 6" x 3.5"
- Temperatures : Operating: -20 to 120F



Real Time Alerts

Water & Waste Water Treatment & Process Monitoring

- Conductivity, pH, ORP, etc. monitor and alarms
- Bleed valve monitoring and alarms
- Chemical tank/drum level switch alarms: low, high
- Optional chemical feed pump alarms
- Continuous tank level monitor & alarms
- Tank level switch alarms: low-low, low, high, high-high
- Optional valve/pump alarms with tank level or flow detection sensors
- Process analyzers remote monitoring & alarms
- Chlorine, DO, Fluoride, Nitrate, Temperature, Turbidity, Suspended solids
- Optional reagent level alarms
- Chlorination/Dechlorination monitoring & alarms
- Chlorine, Acid, Base tank level alarms
- Optional chemical feed pump & dump valve alarms



The screenshot shows an Excel spreadsheet titled "Microsoft Excel" with a data log report. The columns include: Time, Conductivity, pH, Level, Flow, Status, and Pump Status. The data rows show various sensor readings and alarm events over time, such as "High Alarm" and "Flow Switch" events.

Excel Data Log Report

Ordering Guide

EC - [__-PW__-AI__-AC__]
 A B C - D Options

(A) Enclosure type / Wiring setup

P = Nema 4X, 8" x 4" x 3" enclosure
 N = Nema4X, 6" x 6" x 3.5" enclosure

(B) VDC Voltage supply

0 = 15vdc internal AC/DC power transformer pre-wired
 1 = 24vdc AC/DC transformer pre-wired
 2 = Outdoor AC/DC transformer [call us]

(C) backup battery with "power failure" alert

0 = no backup battery
 B = backup battery/power failure alert [N model only]

(D) Wireless network

Call or email us with the facility ZIP and we'll tell you which network to choose.

US1P = USA – pager network 1
 US2P = USA – pager network 2
 US1C = USA – cellular network 1
 US2C = USA – cellular network 2



"P" enclosure



"N" enclosure

OPTIONS

___ Target application for unit pre-programming
 - GI: Generic Industrial application [default]
 - CB: Cooling & Boiler water treatment
 - TI: Tank inventory management

PW___ Pre-wiring of cable (1 included, addtl extra)
 - 10x1: (1) 10-wire cable - 2 analog & 5 digital
 - 4x1: (1) 4-wire cable – 2 inputs

AI___ Analog isolator [AI1, AI2, AI3 or AI4]
 - Isolation for self-powered, 2-wire 420mA inputs
 - AI required with Aquatrac, Advantage, LMI

AC___ AC on/off sensor [AC1, AC2, AC3, AC4 or AC5]
 - for VAC outlet power monitoring such as bleed valves, chemical pumps, etc.